

JH Solar

Eta2824 energy storage time



Overview

How much does an ETA 2824 cost?

And there are also 2824-2 versions with COSC certification. The price for the ETA caliber 2824-2 is about 350 to 400 US dollars/ euros. As the patents on the ETA 2824 ended in 2002 the movement was cloned a lot. The most renewed clone is the Sellita SW200 series. And the Soprod caliber P024 for instance.

What is the difference between ETA 2824 and Eta 2836-2?

One of the most common Swiss watch movements, the ETA 2824-2 is the third refinement of the original ETA 2824. Like most ETA movements, Cal. 2824-2 is available in Standard, Elaborate, Top, and Chronometer versions. The similar ETA 2836-2 adds a day wheel.

How does the ETA 2824-2 work?

Depending on the watchmaker, the date window can be positioned at different locations on the dial. With its Etachron regulator, the ETA 2824-2 produces a beat frequency of 28,800 vibrations per hour (4Hz). The ETA 2824-2 is also equipped with a ball-bearing rotor that winds bidirectionally to energise its power reserve.

How long does a ETA 2824-2 rotor last?

With its Etachron regulator, the ETA 2824-2 produces a beat frequency of 28,800 vibrations per hour (4Hz). The ETA 2824-2 is also equipped with a ball-bearing rotor that winds bidirectionally to energise its power reserve. Once fully wound, this ETA movement can last for approximately 38 hours.

Should you buy a ETA 2824-2 watch?

If you are looking for a trusty timekeeper with a movement you can always count on, a wristwatch that carries an ETA 2824-2 calibre is highly recommended. As we mentioned before, the ETA 2824-2 is an extremely

ubiquitous movement and there are many different watches that utilise it.

Is the ETA 2824-2 a good timekeeper?

Sure, it might not look the most impressive, but the ETA 2824-2 more than makes up for that with quality and robustness. If you are looking for a trusty timekeeper with a movement you can always count on, a wristwatch that carries an ETA 2824-2 calibre is highly recommended.

Eta2824 energy storage time

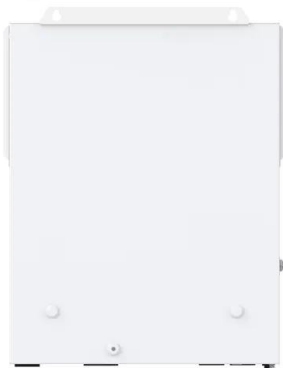


The History of the ETA 2824, the ...

The ETA 2824 movement was a groundbreaking invention that left a lasting impact on the watchmaking industry. Introduced in the 1970s, the ETA 2824 ...

ETA 2824, strong and universal Swiss mechanism

The 1429U and 1439U calibers beat only the typical 18,000 vph for the time, but the ETA 2824 has been redesigned to run at 28,800 vph. The only difference between the Eterna 1429U and 1439U calibers is that the latter ...



A Complete Guide to the Efficient ETA 2824-2 Movement

This ETA 2824 is one of the most used three-handler calibers, and based on the Eterna caliber 1427. There are three generations of this movement: the 1st generation (1971-1979), the second 2824-1 generation (1979-1982) ...

Five Great Watches with ETA 2824 Movements

Hamilton's Khaki Field line has something for everyone (time only, day-date, quartz), but we're focusing on the basic Khaki Field Automatic with the ETA 2824-2 inside. Hamilton is owned by

Swatch Group, so it ...



[tudor 2824 energy storage](#)

A battery/ultracapacitor hybrid energy storage system for ... As shown in Fig. 4 (a), P_{in_pu} should follow the power reference given by the frequency-droop $-P_{r_pu}$, and it changes ...

Five Great Watches with ETA 2824 Movements

Hamilton's Khaki Field line has something for everyone (time only, day-date, quartz), but we're focusing on the basic Khaki Field Automatic with the ETA 2824-2 inside. ...



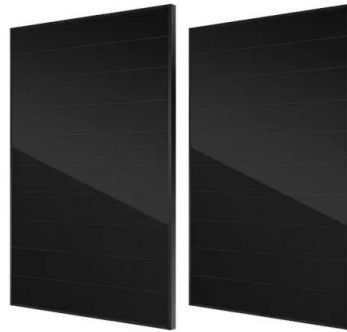
[2824-2 movement energy storage](#)

Size:44.0mm*13.8mm (Diameter*Thickness)
 Swiss ETA 2824-2 25 Jewels Automatic Mechanical Single Calendar Movement provides a precise time and a storage of energy over 40 hours.



Newbie Question: Setting the date with an ETA 2824-2

Hey Everyone, I'm pretty new to automatic watches. I have a quick question about whether I made a mistake in how I set the time/date on My Lum-Tec M-38, which has a ...



ETA 2824 Vs ETA 2824-2

Hi All, Building my first watch, bought a case from sizzlin watches (Rolex Sub Homage) and it requires at ETA 2824 with date window at 3pm. I am having a hard time ...

Automatic Watches-ETA 2824-2

Coming off the two older movements, it was time to learn a bit about some modern movements. First to learn on is one of the most popular movements used in watchmaking-an ETA 2824-2. This movement ...



Question about power reserve of 2824-2

Not bad, close to 38 hrs power reserve of this movement. it seems to be a good weekly watch but needs additional wrist time over the weekend to keep it ticking.

ETA 2824-2

One of the most common Swiss watch movements, the ETA 2824-2 is the third refinement of the original ETA 2824. Like most ETA movements, Cal. 2824-2 is available in Standard, Elaborate, Top, and ...



ETA chart of basic details: ETA 2824-2, 2892-A2, & 7750

Here's a chart of some of the info on the ETA 2824-2, 2892-A2, & 7750 movements: ETA's holy trinity. COSC Standards Average daily rate: -4/+6 sec Mean variation ...

ETA caliber 2824 / 2824-1 / 2824-2 (movement ...

This ETA 2824 is one of the most used three-hander calibers, and based on the Eterna caliber 1427. There are three generations of this movement: the 1st generation (1971-1979), the second 2824-1 generation (1979-1982) ...



ETA Movement Grades Explained , Caliber Corner

How Many Grades of ETA Movements Are There? ETA offers four grades of watch movements: Standard Elaborate (Elaborated) Top Chronometer Accuracy Between Grades: These ratings may vary between specific ...

ETA 2824 low power reserve : r/watchrepair

It's basically been stationary for the past 10 years and I took it out of storage recently. I handwound it about 30 times on Monday morning and have been wearing it daily about 8-9 ...



Our Lifepo4 batteries can beconnected in parallels and in series for larger capacity and voltage.



ETA6497 Movement Energy Storage: The Heartbeat of Vintage ...

As one Geneva watchmaker quipped: "The ETA6497 is like good denim - it only gets better with age." Whether you're modding a \$200 Parnis [2] or maintaining a \$10,000 ...

Powermatic 80 movement

Besides the actual ETA 2824-2 movement, related movements like the 2836-2 in Powermatic-80 version are also manufactured. This differs from the 2824-2 by the additional day display ...

APPLICATION SCENARIOS

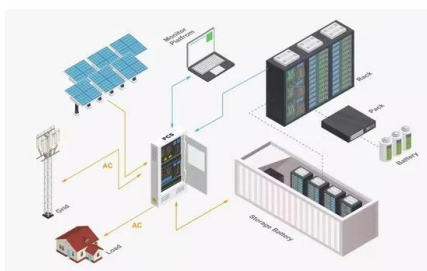


Eta2824

The robust design and meticulous manufacturing process mean that ETA2824 can withstand the test of time and harsh conditions. Whether you're navigating through the rugged terrain of a ...

how does the 2824 movement release stored energy

The ETA 2824 is a mechanical movement found in watches that is powered by a rotor that can wind in both directions. It has a stop second and manual winding mechanism as well.



eta2824 energy storage time

One of the most common Swiss watch movements, the ETA 2824-2 is the third refinement of the original ETA 2824. Like most ETA movements, Cal. 2824-2 is available in Standard, Elaborate, ...

How much energy does eta2824-2 store? , NenPower

Each of these aspects contributes to making eta2824-2 a highly efficient energy storage solution. The capacity of eta2824-2 varies depending on specific application ...



Contact Us

For catalog requests, pricing, or partnerships, please visit:
<https://apartamenty-teneryfa.com.pl>