

**JH Solar**

# How efficient is the flywheel energy storage system



## Overview

---

Compared with other ways to store electricity, FES systems have long lifetimes (lasting decades with little or no maintenance; full-cycle lifetimes quoted for flywheels range from in excess of 10 , up to 10 , cycles of use), high (100–130 W·h/kg, or 360–500 kJ/kg), and large maximum power output. The (ratio of energy out per energy in) of flywheels, also known as round-trip efficiency, can be as high as 90%. Typical capacities range from 3 to 13.

A flywheel energy storage system is a mechanical device used to store energy through rotational motion. When excess electricity is available, it is used to accelerate a flywheel to a very high speed. The energy is stored as kinetic energy and can be retrieved by slowing down the flywheel.

A flywheel energy storage system is a mechanical device used to store energy through rotational motion. When excess electricity is available, it is used to accelerate a flywheel to a very high speed. The energy is stored as kinetic energy and can be retrieved by slowing down the flywheel.

Flywheel energy storage systems exhibit high efficiency due to their innovative design and technology. 1. Efficiency levels can reach up to 90-95%, making them a robust choice for energy applications. 2. Their fast response times enable quick energy discharge and recharge, contributing to their.

Flywheel energy storage (FES) works by accelerating a rotor (flywheel) to a very high speed and maintaining the energy in the system as rotational energy. When energy is extracted from the system, the flywheel's rotational speed is reduced as a consequence of the principle of conservation of.

Flywheel technology is a sophisticated energy storage system that uses a spinning wheel to store mechanical energy as rotational energy. This system ensures high energy output and efficient recovery. With forces that help keep the flywheel stable, it can maintain efficiency. These flywheels are.

By harnessing the kinetic energy stored in a rotating mass, flywheels are transforming the landscape of energy storage, grid stability, and industrial productivity. The fundamental principle behind flywheel technology is rooted in the concept of rotational kinetic energy. By accelerating a massive. What is the difference between a flywheel and a battery storage system?

Flywheel Systems are more suited for applications that require rapid energy bursts, such as power grid stabilization, frequency regulation, and backup power for critical infrastructure. Battery Storage is typically a better choice for long-term energy storage, such as for renewable energy systems (solar or wind) or home energy storage.

How efficient is a flywheel energy storage system?

Their efficiency is high during energy storage and energy transfer (>90 %). The performance of flywheel energy storage systems operating in magnetic bearing and vacuum is high. Flywheel energy storage systems have a long working life if periodically maintained (>25 years).

What is flywheel technology?

We will explore its advantages, applications across various industries, and a comparative analysis with other storage methods. Flywheel technology is a sophisticated energy storage system that uses a spinning wheel to store mechanical energy as rotational energy. This system ensures high energy output and efficient recovery.

What is flywheel energy storage system (fess)?

Flywheel energy storage system (FESS) is one of the most satisfactory energy storage which has lots of advantages such as high efficiency, long lifetime, scalability, high power density, fast dynamic, deep charging, and discharging capability.

What makes a flywheel more efficient?

With forces that help keep the flywheel stable, it can maintain efficiency. These flywheels are made from high-strength carbon-fiber composites, designed to minimize energy loss and maximize mechanical efficiency. Magnetic bearings reduce friction, while high-temperature superconductors enhance energy capacities.

How does a flywheel store energy?

The flywheel, made of durable materials like composite carbon fiber, stores energy in the form of rotational kinetic energy. Here's a breakdown of the process: Energy Absorption: When there's surplus electricity, such as when the grid is overproducing energy, the system uses that excess power to accelerate the flywheel.

## How efficient is the flywheel energy storage system

---

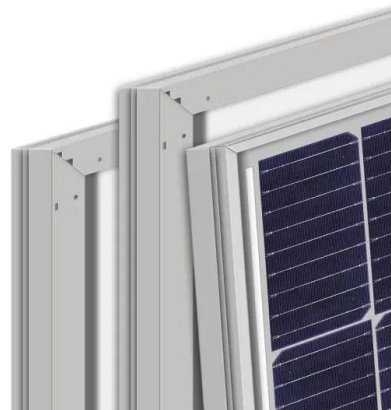


### The Efficiency of Flywheel Energy Storage Technology: Spinning ...

Flywheel energy storage systems (FESS) - those whirling mechanical beasts - are turning heads in the renewable energy game. But how efficient is this technology really?

### Why NASA's Mechanical Battery Could Be the ...

NASA's flywheel-based mechanical battery system showcased a sustainable and efficient alternative to chemical batteries, using gyroscopic principles for energy storage and spacecraft orientation.



### Top 5 Advanced Flywheel Energy Storage Startups in 2025

Torus is revolutionizing the energy storage landscape with its advanced Flywheel Energy Storage System (FESS), which offers a sustainable and efficient alternative to traditional chemical ...

### Flywheel Energy Storage System: What Is It and ...

High Efficiency: Flywheel systems are highly efficient at storing and releasing energy, with

minimal energy loss over time. Environmentally Friendly: Since there are no harmful chemicals or heavy metals involved, flywheels are ...



## Critical Review of Flywheel Energy Storage ...

The flywheel in comparison to other typical energy storage systems has a lot of benefits; these benefits are a reduction in environmental issues, high energy/power density, high efficiency, and accessibility of ...

## Development of a High Specific Energy Flywheel Module, ...

A sizing code based on the G3 flywheel technology level was used to evaluate flywheel technology for ISS energy storage, ISS reboost, and Lunar Energy Storage with favorable results.



## A Comprehensive Review on Flywheel Energy Storage Systems: ...

So, in this study, the FESS configuration, including the flywheel (rotor), electrical machine, power electronics converter, control system, and bearing are reviewed, individually ...

## Flywheel energy storage

Overview Physical characteristics Main components Applications Comparison to electric batteries See also Further reading External links

Compared with other ways to store electricity, FES systems have long lifetimes (lasting decades with little or no maintenance; full-cycle lifetimes quoted for flywheels range from in excess of 10, up to 10, cycles of use), high specific energy (100-130 W·h/kg, or 360-500 kJ/kg), and large maximum power output. The energy efficiency (ratio of energy out per energy in) of flywheels, also known as round-trip efficiency, can be as high as 90%. Typical capacities range from 3 kWh to 13...



114KWh ESS



ISO 9001 ISO 14001 PICC RoHS CE MSDS UN38.3 UK CA IEC

## A Review of Flywheel Energy Storage System ...

Energy storage systems (ESS) provide a means for improving the efficiency of electrical systems when there are imbalances between supply and demand. Additionally, they are a key element for improving the stability ...

## High Speed Flywheel Energy Storage system For Efficient ...

Abstract - For efficient utilization of available renewable energy in the form of solar, wind, geothermal, etc. it is imperative that a reliable energy storage system is incorporated, so that ...



## A review of flywheel energy storage systems: state of the art and

There is noticeable progress in FESS, especially



in utility, large-scale deployment for the electrical grid, and renewable energy applications. This paper gives a review of the ...

## Design and Research of a New Type of Flywheel Energy Storage System

This system offers advantages such as simplicity in structure, high energy storage density, and low energy consumption; thus, making it well-suited for highly efficient ...



## What is the efficiency of the flywheel energy ...

The efficiency of a flywheel energy storage system typically ranges from 1. 70% to 90%, 2. Involves energy loss due to friction and air resistance, 3. Offers rapid charge and discharge capabilities, 4. Provides ...

## What is a Flywheel Storage System? High-Speed Energy Backup ...

Conclusion Flywheel storage systems represent a high-speed, efficient, and environmentally friendly energy storage solution. Their unique characteristics make them well ...



## Economic evaluation of kinetic energy storage ...

The innovative potential of high-speed flywheel energy storage systems (FESS) can be seen in increasing the reliability of the electricity transmission system with the possibility of providing control ...



## Flywheel Energy Storage , Energy Engineering ...

The flywheel energy storage system is useful in converting mechanical energy to electric energy and back again with the help of fast-spinning flywheels. This system is composed of four key parts: a solid ...



## Magnetic Levitation Flywheel Energy Storage System With Motor-Flywheel

This article proposed a compact and highly efficient flywheel energy storage system. Single coreless stator and double rotor structures are used to eliminate the idling loss caused by the ...

## Comprehensive review of energy storage systems technologies, ...

Battery, flywheel energy storage, super capacitor, and superconducting magnetic energy storage are technically feasible for use in distribution networks. With an energy density ...



## A review of flywheel energy storage systems: state of the art and

In this paper, state-of-the-art and future opportunities for flywheel energy storage systems are reviewed. The FESS technology is an interdisciplinary, complex subject that ...



### Flywheel Energy Storage

Flywheel energy storage, also known as kinetic energy storage, is a form of mechanical energy storage that is a suitable to achieve the smooth operation of machines and to provide high ...



48V 100Ah

## Development and prospect of flywheel energy storage ...

Some of the applications of FESS include flexible AC transmission systems (FACTS), uninterrupted power supply (UPS), and improvement of power quality [15]. ...



## Applications of flywheel energy storage system on load frequency

Flywheel energy storage systems (FESS) are considered environmentally friendly short-term energy storage solutions due to their capacity for rapid and efficient energy storage ...





## Optimising flywheel energy storage systems for enhanced

...

The critical contribution of this work is studying the relationships and effects of various parameters on the performance of flywheel energy storage, which can pave the way for ...

## Unlock the Secrets of Energy Efficiency: How Flywheels Are

Explore the dynamic world of flywheels: this article delves into their??, applications in energy storage, benefits, and advanced technologies, harnessing kinetic energy ...

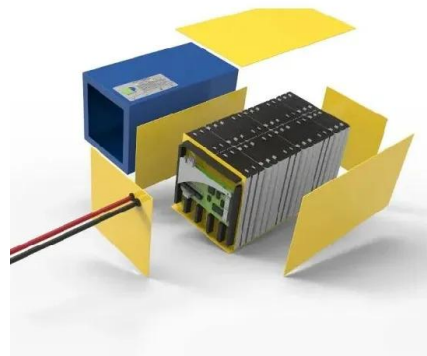


## [Energy storage systems: a review](#)

The world is rapidly adopting renewable energy alternatives at a remarkable rate to address the ever-increasing environmental crisis of CO2 emissions....

## Enhancing vehicular performance with flywheel energy storage systems

Flywheel Energy Storage Systems (FESS) are a pivotal innovation in vehicular technology, offering significant advancements in enhancing performance in vehicular ...



## Flywheel Energy Storage

Flywheel energy storage is defined as a method for storing electricity in the form of kinetic energy by spinning a flywheel at high speeds, which is facilitated by magnetic levitation in an ...



### **What is the energy storage efficiency of a flywheel?**

In light of the foregoing discussion on energy storage through flywheel systems, one can assert that they represent a significant advancement in efficient energy management. The correlation between ...



### **A comprehensive review of Flywheel Energy Storage System ...**

Energy storage systems (ESSs) play a very important role in recent years. Flywheel is one of the oldest storage energy devices and it has several benefits. Flywheel ...

### **Fact Sheet , Energy Storage (2019) , White Papers , EESI**

Pumped-Storage Hydropower Pumped-storage hydro (PSH) facilities are large-scale energy storage plants that use gravitational force to generate electricity. Water is ...





## The Flywheel Energy Storage System: A Conceptual Study, ...

electromechanical storage system in which energy is stored in the kinetic energy of a rotating mass. Flywheel systems are composed of various materials including those with steel flywheel ...

## Flywheel Energy Storage: Alternative to Battery ...

As the energy grid evolves, storage solutions that can efficiently balance the generation and demand of renewable energy sources are critical. Flywheel energy storage systems offer a durable, efficient, and ...



## Flywheel Energy Storage Systems and their Applications: A ...

Flywheel energy storage systems are suitable and economical when frequent charge and discharge cycles are required. Furthermore, flywheel batteries have high power density and a ...

## Flywheel Energy Storage , Efficient Power Solutions

Flywheels can store rotational energy efficiently and respond rapidly when needed, making it the perfect short-term energy storage solution.



## Contact Us

---

For catalog requests, pricing, or partnerships, please visit:  
<https://apartamenty-teneryfa.com.pl>