

JH Solar

Punch flywheel energy storage principle



Overview

First-generation flywheel energy-storage systems use a large steel flywheel rotating on mechanical bearings. Newer systems use carbon-fiber composite rotors that have a higher tensile strength than steel and can store much more energy for the same mass.

Flywheel energy storage (FES) works by accelerating a rotor to a very high speed and maintaining the energy in the system as . When energy is extracted from the system, the flywheel's rotational.

A typical system consists of a flywheel supported by connected to a . The flywheel and sometimes.

TransportationAutomotiveIn the 1950s, flywheel-powered buses, known as .

- • • - Form of power supply
- - High-capacity electrochemical capacitor .

GeneralCompared with other ways to store electricity, FES systems have long lifetimes (lasting decades).

Flywheels are not as adversely affected by temperature changes, can operate at a much wider temperature range, and are not subject to many of the common failures of chemical . They are also less potentially damaging to the environment, being.

- Beacon Power Applies for DOE Grants to Fund up to 50% of Two 20 MW Energy Storage Plants, Sep. 1, 2009
- Sheahen.

Flywheels store rotational kinetic energy in the form of a spinning cylinder or disc, then use this stored kinetic energy to regenerate electricity at a later time. The amount of energy stored in a flywheel depends on the dimensions of the flywheel, its mass, and the rate at which it spins.

Flywheels store rotational kinetic energy in the form of a spinning cylinder or disc, then use this stored kinetic energy to regenerate electricity at a later time. The amount of energy stored in a flywheel depends on the dimensions of the flywheel, its mass, and the rate at which it spins.

Flywheel energy storage (FES) works by accelerating a rotor (flywheel) to a very high speed and maintaining the energy in the system as rotational energy. When energy is extracted from the system, the flywheel's rotational speed is reduced as a consequence of the principle of conservation of.

Flywheel energy storage is a sophisticated technology harnessing kinetic energy to provide a multitude of applications, particularly in energy management systems. By employing a rotating mass, flywheel systems store energy mechanically, allowing for quick discharge and recharge cycles. This.

wn in Fig. 1, includes a flywheel rotor, an electric motor/generato and its associated drive, bearing systems, and a containment. The flywheel rotor is a moving mass that stores the kinetic energy. The machine and drive work in three modes of operation, i.e., charging, standby and discharging, and.

Flywheel Energy Storage Systems (FESS) rely on a mechanical working principle: An electric motor is used to spin a rotor of high inertia up to 20,000-50,000 rpm. Electrical energy is thus converted to kinetic energy for storage. For discharging, the motor acts as a generator, braking the rotor to.

Flywheel energy storage technology is an emerging energy storage technology that stores kinetic energy through a rotor that rotates at high speed in a low-friction environment, and belongs to mechanical energy storage technology. It has the characteristics of high power, fast response, high.

PUNCH Flybrid, a leading developer of mobile flywheel energy storage solutions, has launched production of its PUNCH Power 200 (PP200) Energy Storage system, for use with power generation equipment. Designed to seamlessly connect to any power grid, PP200 is able to rapidly inject and absorb power. What is a flywheel energy storage system?

First-generation flywheel energy-storage systems use a large steel flywheel rotating on mechanical bearings. Newer systems use carbon-fiber composite rotors that have a higher tensile strength than steel and can store much more energy for the same mass. To reduce friction, magnetic bearings are sometimes used instead of mechanical bearings.

Why do flywheel energy storage systems have a high speed?

There are losses due to air friction and bearing in flywheel energy storage systems. These cause energy losses with self-discharge in the flywheel energy storage system. The high speeds have been achieved in the rotating body

with the developments in the field of composite materials.

Can small applications be used instead of large flywheel energy storage systems?

Small applications connected in parallel can be used instead of large flywheel energy storage systems. There are losses due to air friction and bearing in flywheel energy storage systems. These cause energy losses with self-discharge in the flywheel energy storage system.

What are the disadvantages of Flywheel energy storage systems?

In addition, this storage technology is not affected by weather and climatic conditions . One of the most important issues of flywheel energy storage systems is safety. As a result of mechanical failure, the rotating object fails during high rotational speed poses a serious danger. One of the disadvantages of these storage systems is noise.

How long does a flywheel energy storage system last?

Flywheel energy storage systems have a long working life if periodically maintained (>25 years). The cycle numbers of flywheel energy storage systems are very high (>100,000). In addition, this storage technology is not affected by weather and climatic conditions . One of the most important issues of flywheel energy storage systems is safety.

How much power can a flywheel store?

In the present scenario, flywheels of 1 kW power storage capacity for 3 h and 100 kW for 30 s have been successfully developed. Design of Larger wheel to store 250 kW power for 10–15 min is under progress. Depending on winding losses, bearing losses and cycling process, the round trip efficiency of flywheel modules varies from 80% to 85% .

Punch flywheel energy storage principle



Mechanical punch flywheel energy storage

How does a flywheel energy storage system work? Flywheel Energy Storage Systems (FESS) rely on a mechanical working principle: An electric motor is used to spin a rotor of high inertia ...

Flywheel energy storage

Flywheel energy storage (FES) works by accelerating a rotor (flywheel) to a very high speed and maintaining the energy in the system as rotational energy. When energy is extracted from the ...



Flywheel Energy Storage

Flywheel energy storage is defined as a method for storing electricity in the form of kinetic energy by spinning a flywheel at high speeds, which is facilitated by magnetic levitation in an ...



principle of flywheel vacuum energy storage

Flywheel energy storage, a physical energy storage technology, converts electric and kinetic energy through motors and generators. Because flywheel energy storage presents many ...



Understanding the Principle of Flywheel Energy Storage ...

At its core, a flywheel is like a spinning dancer - the faster it rotates, the more energy it stores. The principle of flywheel energy storage mechanism relies on converting electrical energy into ...

Technology: Flywheel Energy Storage

Summary of the storage process Flywheel Energy Storage Systems (FESS) rely on a mechanical working principle: An electric motor is used to spin a rotor of high inertia up to 20,000-50,000 ...



A review of flywheel energy storage systems: state ...

Thanks to the unique advantages such as long life cycles, high power density and quality, and minimal environmental impact, the flywheel/kinetic energy storage system (FESS) is gaining steam

Overview of Flywheel Systems for Renewable Energy ...

storage systems (FESS) are summarized, showing the potential of axial-flux permanent-magnet (AFPM) machines in such applications. Design examples of high-speed AFPM machines are ...



Flywheel , Types, Functions, Advantages, ...

A flywheel is a heavy rotating body which acts as a reservoir of energy. The flywheel acts as a bank of energy between the energy source and machinery.

Flywheel Energy Storage , Energy Engineering ...

The flywheel energy storage system is useful in converting mechanical energy to electric energy and back again with the help of fast-spinning flywheels. This system is composed of four key parts: a solid ...

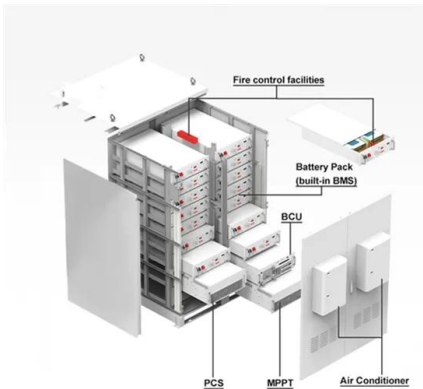


Flywheel Energy Storage , Working & Applications

A flywheel is an inertial energy storage device. It absorbs mechanical energy and serves as a reservoir, storing energy during the period when the supply of energy is more than the requirement and ...

(PDF) Design and Analysis of Flywheel for ...

The flywheel is the simplest device for mechanical battery that can charge/discharge electricity by converting it into the kinetic energy of a rotating flywheel, and vice versa. The energy storage



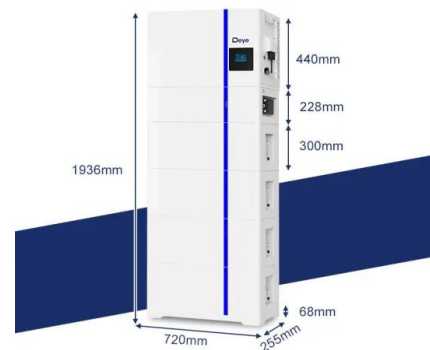
What is Flywheel Energy Storage? , Linquip

Electric energy is supplied into flywheel energy storage systems (FESS) and stored as kinetic energy. Kinetic energy is defined as the "energy of motion," in this situation, the motion of a rotating mass ...

A review of flywheel energy storage systems: state of the art and

In this paper, state-of-the-art and future opportunities for flywheel energy storage systems are reviewed. The FESS technology is an interdisciplinary, complex subject that ...

ESS



Flywheel Energy Storage Systems and their Applications: A ...

Flywheel energy storage systems are suitable and economical when frequent charge and discharge cycles are required. Furthermore, flywheel batteries have high power density and a ...

(PDF) Physical Energy Storage Technologies: ...

This paper focuses on three types of physical energy storage systems: pumped hydro energy storage (PHES), compressed air energy storage (CAES), and flywheel energy storage system (FESS), and

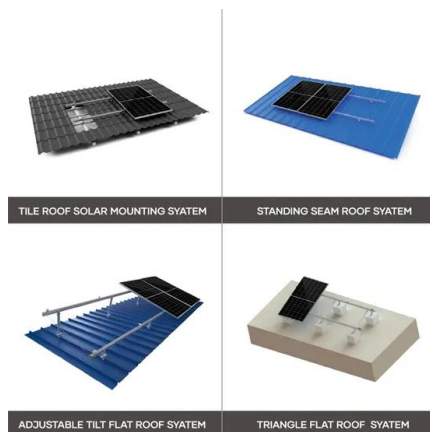


Microsoft Word

Flywheel is a very ancient device used for storing energy and this stored energy could be used for completion of desired task. Size of flywheel was used to design based upon energy storage

Overview of Flywheel Systems for Renewable Energy ...

Energy can be stored through various forms, such as ultra-capacitors, electrochemical batteries, kinetic flywheels, hydro-electric power or compressed air. Their comparison in terms of specific ...

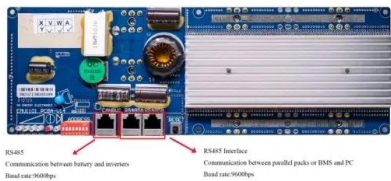


What is the principle of flywheel energy storage

The flywheel energy storage principle is characterized by its mechanical storage capabilities, which enables efficient energy management across sectors, including renewable energy integration and transportation.

Technology: Flywheel Energy Storage

Flywheel Energy Storage Systems (FESS) rely on a mechanical working principle: An electric motor is used to spin a rotor of high inertia up to 20,000-50,000 rpm.



Flywheel Energy Storage

Flywheel energy storage, an innovative mechanical energy storage method, will hold a significant position in the future energy storage field due to its unique energy conversion principles and wide application prospects. What ...



PUNCH Power 200

In the case of PP200, energy savings are achieved through load-leveilling the prime power source, most commonly a diesel engine. By storing energy during periods of lower power demand and ...



Flywheel energy storage solutions enhance ...

The principle of the flywheel storage is similar to the recuperation in electric cars. The flywheel takes in the energy that would normally be lost when a machine brakes to a stop or when lowering the ...

Design and Analysis of Flywheel for a Punching Machine ...

Abstract: A flywheel is an inertial energy-storage device. It absorbs mechanical energy and serves as a reservoir, storing energy during the period when the supply of energy is more than the ...



zhongglu company flywheel energy storage principle

Unleashing the Power of Flywheel Energy Storage , KNF PUNCH Flybrid, an expert in uninterruptible power supply systems, demonstrates the practical application of flywheel ...

NRMM to Net Zero using Flywheel and Battery Storage with ...

The prototypes developed during this project were a new high-power flywheel energy storage system driven by a new power-dense electric motor and a new high-power energy storage ...



Contact Us

For catalog requests, pricing, or partnerships, please visit:
<https://apartamenty-teneryfa.com.pl>