

JH Solar

The function of the switch energy storage motor



Overview

The energy storage switch controls the start and stop of the energy storage motor. The function of the energy storage motor is to drive the energy storage mechanism to compress the spring of the closing mechanism, so that the closing mechanism spring generates a certain amount of compression.

The energy storage switch controls the start and stop of the energy storage motor. The function of the energy storage motor is to drive the energy storage mechanism to compress the spring of the closing mechanism, so that the closing mechanism spring generates a certain amount of compression.

Enter the switch energy storage motor - the unsung hero in circuit breakers that acts like a ninja, swiftly cutting off dangerous electrical surges. This article breaks down its magic for engineers, tech enthusiasts, and anyone who's ever stared at a substation and thought: "How's that even work?"

".

The energy storage switch controls the start and stop of the energy storage motor. The function of the energy storage motor is to drive the energy storage mechanism to compress the spring of the closing mechanism, so that the closing mechanism spring generates a certain amount of compression.

The secret sauce lies in switch energy storage motors - the shape-shifting wizards of modern power systems. Unlike your grandma's lead-acid battery (no offense to Grandma), these systems use bidirectional motor-generators that can flip roles faster than a politician during election season. These.

The function of the switch energy storage motor



Principle of Energy Storage Switch , Nader Circuit Breaker

The function of the energy storage motor is to drive the energy storage mechanism to compress the spring of the closing mechanism, so that the closing mechanism spring generates a certain ...



Understanding Electric Motor Switches: A Wipro ...

Before we dive into the types and applications of a switch for electric motor, it's crucial to understand their basic function. Electric motor

Starting System , Components and Working Of ...

Starting System , Components and Working Of Starting System The starter motor is an electric motor that rotates your engine in order to allow the spark and fuel injection systems to begin the engine's operation under its own ...

Commercial and Industrial ESS

Air Cooling / Liquid Cooling

- Budget Friendly Solution
- Renewable Energy Integration
- Modular Design for Flexible Expansion



The Principle of Switch Energy Storage Motor: Where Physics ...

The principle of switch energy storage motor operates like a hyper-efficient dance between magnetism and mechanical motion. Imagine your blender suddenly became a temporary ...

switches are devices designed to control the electrical circuit that powers an electric ...



How Switch Energy Storage Motors Work: A Beginner's Guide to ...

The secret sauce lies in switch energy storage motors - the shape-shifting wizards of modern power systems. Unlike your grandma's lead-acid battery (no offense to ...

What is the principle of switch energy storage

By promoting a circular energy economy, where energy waste is minimized, and conservation of resources becomes a priority, switch energy storage plays a central role in shaping a sustainable future.



What is the energy storage of the circuit breaker energy ...

Energy storage is the capture of energy produced at one time for use at a later time [1] Changing the altitude of solid masses can store or release energy via an elevating system ...

Unlocking the Power Trio: How ABB Switch, Energy Storage, and ...

That's where ABB's switch-energy storage-motor ecosystem becomes the unsung hero of modern manufacturing. Imagine a symphony where circuit breakers conduct ...



Abb switch energy storage motor does not stop

Abb switch energy storage motor does not stop
Harnessing motor, drive and energy storage technology from ABB allows system integrator, Frey AG Stans to install a solution that ...

How does the energy storage motor send a signal ...

When the energy storage motor concludes the charging cycle, it must send a signal to various systems, including the control unit and external monitoring systems. This notification is crucial for energy ...



The function of the switch energy storage motor

Since the electric motor functions as the propulsion motor or generator, it is possible to achieve greater flexibility and performance of the system. It needs more advanced energy management ...

Principle of Energy Storage Switch

The function of the energy storage motor is to drive the energy storage mechanism to compress the spring of the closing mechanism, so that the closing mechanism spring generates a certain ...



Electrical Systems of Pumped Storage Hydropower Plants

Executive Summary While the concept of pumped storage hydropower (PSH) is not new, adjustable-speed pumped storage hydropower (AS-PSH) is equipped with power electronics; ...

Understanding the Principle of Switch Energy Storage Motor: A

At its core, a switch energy storage motor operates like a wind-up toy from your childhood - but instead of making a plastic robot walk, it saves entire power grids.



Understanding the Principle of Switch Energy Storage Circuits

When a Tesla Model S brakes, its motor acts as a generator. Switch circuits capture kinetic energy, convert it to electrical energy, and shove it back into the battery. According to t

State switch control of magnetically suspended flywheel energy storage

The magnetically suspended flywheel energy storage system (MS-FESS) is an energy storage equipment that accomplishes the bidirectional transfer between electric energy ...

Solar



Principle of Energy Storage Switch

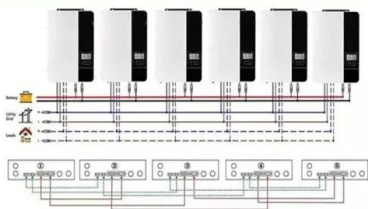
The energy storage switch controls the start and stop of the energy storage motor. The function of the energy storage motor is to drive the energy storage mechanism to compress the spring of ...

Why does the switch store energy? , NenPower

Let's address the question directly: 1. Switches store energy temporarily during operation, 2. This storage is crucial for managing current flow, 3. Energy is often stored in magnetic fields or capacitors, 4. ...

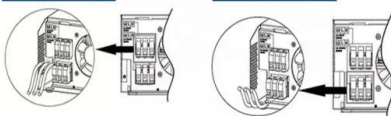


Parallel (Parallel operation up to 6 unit (only with battery connected))



AC input wires

AC output wires



The function of the switch energy storage motor

Why do electric motors need more energy management strategies? Since the electric motor functions as the propulsion motor or generator, it is possible to achieve greater flexibility and ...

Principle of Energy Storage Switch , Nader Circuit Breaker

The energy storage switch controls the start and stop of the energy storage motor. The function of the energy storage motor is to drive the energy storage mechanism to compress the spring of ...



Working principle of switch energy storage motor

As the photovoltaic (PV) industry continues to evolve, advancements in Working principle of switch energy storage motor have become critical to optimizing the utilization of renewable ...

How Switch Energy Storage Motors Work: A Beginner's Guide to ...

The Magic Behind the Switch When Motors Become Time Travelers These aren't your average drill press motors. A switch energy storage motor operates like ...



The function of high voltage cabinet energy storage motor

The energy storage of each module can range from relatively small capacities, such as typical capacitors that act as an intermediary device for energy conversion, or high ABB is an ...

Working principle of switch energy storage motor

The function of the energy storage motor is to drive the energy storage mechanism to compress the spring of the closing mechanism, so that the closing mechanism spring generates a certain ...

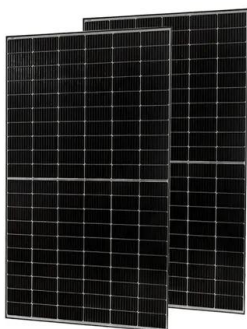
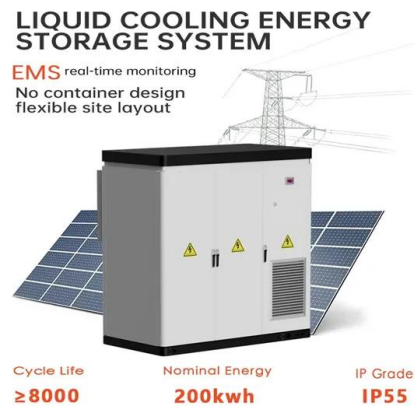


After the energy storage motor is closed

Why do electric motors need more energy management strategies? Since the electric motor functions as the propulsion motor or generator, it is possible to achieve greater flexibility and ...

Why does the switch energy storage motor not store energy

The function of the switch energy storage motor. The function of the energy storage motor is to drive the energy storage mechanism to compress the spring of the closing mechanism, so that ...



FUNCTION OF SWITCHGEAR ENERGY STORAGE DEVICE

The function of the switch energy storage motor. The function of the energy storage motor is to drive the energy storage mechanism to compress the spring of the closing mechanism, so that ...

Contact Us

For catalog requests, pricing, or partnerships, please visit:
<https://apartamenty-teneryfa.com.pl>