

JH Solar

Wellington new energy storage power



Overview

AMPYR Australia (AMPYR) has announced it has achieved financial close of its 300 MW / 600 MWh Wellington Stage 1 battery energy storage system (BESS) project in regional New South Wales (NSW). Once energized in 2026, the Wellington Stage 1 BESS will support the growing demand for reliable.

AMPYR Australia (AMPYR) has announced it has achieved financial close of its 300 MW / 600 MWh Wellington Stage 1 battery energy storage system (BESS) project in regional New South Wales (NSW). Once energized in 2026, the Wellington Stage 1 BESS will support the growing demand for reliable.

The project will include the full suite of Fluence's innovative storage products, including Gridstack™, a 20-year service contract, Mosaic bidding software, and Nispera asset performance management software SYDNEY, July 08, 2025 (GLOBE NEWSWIRE) -- Fluence Energy, Inc. ("Fluence") (NASDAQ: FLNC), a.

Renewable energy developer Ampyr Australia has secured Shell Energy Australia's remaining stake in the 1GWh Wellington battery energy storage system (BESS) in New South Wales. Ampyr Australia, the regional entity of which its parent company is backed by infrastructure investor Stonepeak, now has.

[Sydney, 14 October 2022] AMPYR Australia Pty Ltd (AMPYR) and Shell Energy Australia (Shell Energy) have signed a joint development agreement for a proposed battery energy storage system strategically located in Wellington (the Wellington BESS), Central West New South Wales (NSW). The target.

AMPYR Australia and Shell Energy Australia have signed a joint development agreement for a proposed battery energy storage system at Wellington in New South Wales. The target capacity of the Wellington BESS is 500MW/1,000 MWh, making it one of the largest battery storage projects in the state. It.

The project will be designed as a grid-scale BESS with a total expected discharge capacity of 400MW. The project will have 6,200 battery enclosures with lithium-ion batteries. (Credit: Kumpan Electric on Unsplash) Wellington South Battery Energy Storage System is being developed in NSW,

Australia. Where is Wellington South Battery energy storage system being developed?

Wellington South Battery Energy Storage System is being developed in NSW, Australia. (Credit: Sungrow EMEA on Unsplash) The Wellington Battery Energy Storage System (BESS) is planned to be developed in the central west New South Wales (NSW), Australia. The project will comprise a grid-scale BESS with a total discharge capacity of around 400MW.

What is the Wellington Battery energy storage system (BESS)?

The Wellington Battery Energy Storage System (BESS) is planned to be developed in the central west New South Wales (NSW), Australia. The project will comprise a grid-scale BESS with a total discharge capacity of around 400MW. AMPYR Australia, a renewable energy assets developer in the country, owns 100% of the BESS project.

What is the target capacity of the Wellington Bess?

The target capacity of the Wellington BESS is 500 MW / 1,000 MWh, making it one of the largest battery storage projects in NSW. The Wellington BESS will connect to the adjacent TransGrid Wellington substation, adjacent to the Central West Orana Renewable Energy Zone (Central West Orana REZ).

How long will it take to build the Wellington Battery?

Plans for construction of Stage 2 are ongoing, but construction is likely to follow 12 to 18 months behind Stage 1. The existing Wellington substation is very strategically located within the NSW energy grid. The output from both stages of the Wellington Battery represents the demand from over 60,000 homes.

How many GW of energy storage will Australia have by 2030?

It is worth noting that Ampyr Australia is targeting an operational portfolio of 3GW of energy storage in the country by 2030. Its Singapore-headquartered parent company, Ampyr Energy, is developing around 12GW of projects globally.

What's going on with TransGrid & Wellington Bess?

The two companies launched a joint venture in 2022 to develop the 1GWh Wellington BESS, which will connect to an existing substation of high-voltage

transmission system operator and manager Transgrid at Wellington and be adjacent to Central-West Orana Renewable Energy Zone (REZ).

Wellington new energy storage power

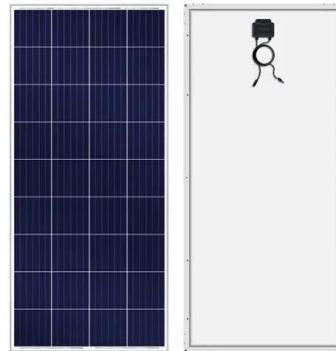


Wellington energy storage solar power generation

First Solar proposes to develop a new 174 megawatt photovoltaic solar farm with an energy storage facility near Wellington in central NSW. from traditional coal and gas fired power ...

Ampyr buys Shell's equity in 1GWh BESS in New ...

The Wellington BESS will be located within the CentralWest Orana REZ. Image: Ampyr Australia. Renewable energy developer Ampyr Australia has secured Shell Energy Australia's remaining stake in the ...



Wellington Battery Energy Storage System, Australia

The Wellington Battery Energy Storage System (BESS) is planned to be developed in the central west New South Wales (NSW), Australia. The project will comprise a ...

AMPYR and Shell Energy to jointly develop, own ...

[Sydney, 14 October 2022] AMPYR Australia Pty Ltd (AMPYR) and Shell Energy Australia (Shell Energy) have signed a joint development agreement for a proposed battery energy

storage system strategically located in ...



Wellington South Battery Energy Storage System

The Wellington Battery Energy Storage System consists of a battery energy storage system with a capacity of 500 megawatts and up to two hours of storage.

Wellington South Battery Energy Storage System

The project incorporates a large-scale battery energy storage system (BESS) with a discharge capacity of 500 megawatts (MW), along with connection to the Wellington substation (and ...

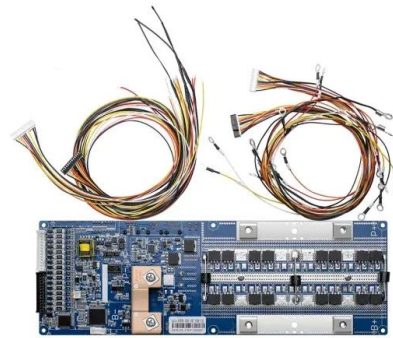


Ampyr buys Shell's equity in 1GWh BESS in New ...

Renewable energy developer Ampyr Australia has secured Shell Energy Australia's remaining stake in the 1GWh Wellington battery energy storage system (BESS) in New South Wales.

Shell Offloads Oz Battery Stake

Ampyr now owns 100% of the 400MW Wellington BESS project in New South Wales Ampyr Australia has acquired Shell's 50% stake in the 300MW Wellington battery ...



2025 AMPYR Project Factsheet Wellington

Wellington Battery The Wellington Battery Energy Storage System (BESS) will store excess renewable energy ready for use by homes and businesses during peak times. BESS projects ...

Fluence Energy Selected by AMPYR Australia for 300 MW Wellington ...

Fluence Energy will supply storage products for AMPYR Australia's 300 MW battery project in New South Wales, enhancing renewable energy capacity.



Ampyr, Shell to develop 500-MW/1,000-MWh battery project in ...

The facility will connect to the TransGrid Wellington substation. Once operational, Shell Energy will hold the rights to charge and dispatch the stored electricity. The ...

Wellington energy storage investment

For energy storage, a new 30% investment tax credit: Pulls forward the cost-improvement curve by three to five years at a minimum; Could render home batteries (as opposed to generators) ...



Fluence Chosen for 300 MW / 600 MWh Wellington Battery ...

The Wellington Stage 1 BESS is AMPYR's first grid-scale battery energy storage system to reach financial close in Australia. This project is scheduled to be energised in 2026, ...

Wellington Container Energy Storage: The Future of Portable Power

A shipping container humming quietly near Wellington's waterfront, powering an entire film set through the night. No diesel fumes, no noise complaints - just clean energy on ...



Wellington Home Energy Storage Power Supply: Your Key to Energy

A sudden power outage hits your neighborhood, but your Netflix marathon continues uninterrupted while your neighbor's generator roars like an angry dinosaur. This isn't magic - ...

H2-View News: AMPYR and Shell Energy to develop 500MW ...

The target capacity of the Wellington BESS is 500MW/1,000 MWh, making it one of the largest battery storage projects in the state.



12V 10AH

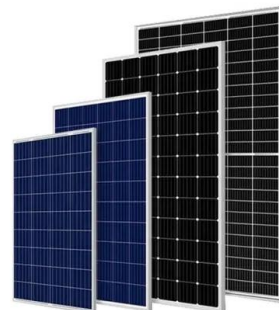


Wellington New Energy Storage Company: Powering the Future ...

Still think energy storage is just glorified AA batteries? Consider this: Wellington's latest solid-state battery prototype could power your EV from Cape Reinga to Bluff on a single charge.

Fluence Chosen for 300 MW / 600 MWh Wellington Battery Energy Storage

Fluence (NASDAQ: FLNC) has been selected by AMPYR Australia for the 300 MW / 600 MWh Wellington Stage 1 Battery Energy Storage System (BESS) project in New ...



Ampyr Energy takes control of 1 GWh big battery project

Renewables developer Ampyr Australia plans to fast track the development of a 1 GWh battery energy storage system in central New South Wales after buying out former ...

Akaysha Energy closes A\$650m debt raise to fund 1,660MWh

Akaysha Energy has closed a A\$650m debt raise with a group of eleven domestic and foreign banks that will provide construction funding for Akaysha's 1,660MWh ...



Commodities and the energy transition , Wellington ...

Low-carbon transition categories Energy generation & storage Meeting the dual imperative of generating reliable, inexpensive energy while achieving decarbonization goals for the power sector will not be easy. New demand ...

Fluence Chosen for 300 MW / 600 MWh Wellington Battery Energy Storage

Fluence Chosen for 300 MW / 600 MWh Wellington Battery Energy Storage System for AMPYR Australia Julian Nebreda, President and Chief Executive Officer, Fluence, ...

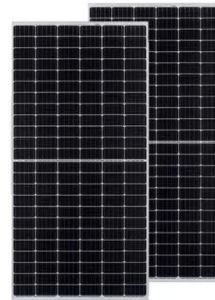


AMPYR Australia secures funding for Wellington Stage 1 BESS

AMPYR Australia has secured funding above A\$340m (\$221m) for its 300MW/600 megawatt hours (MWh) Wellington Stage 1 battery energy storage system (BESS) ...

AMPYR Australia Takes Over Shell's 50% Stake in Wellington ...

AMPYR Australia is now the full owner of the Wellington Battery Energy Storage System (BESS) after acquiring Shell Energy Australia's 50% stake in the project's stage 1. In a statement, ...



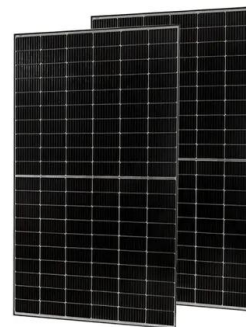
Fluence Chosen for 300 MW / 600 MWh Wellington Battery Energy Storage

The project will include the full suite of Fluence's innovative storage products, including Gridstack(TM), a 20-year service contract, Mosaic bidding software, and Nispera asset ...



AMPYR and Shell Energy to develop 500MW energy storage ...

AMPYR Australia and Shell Energy Australia have signed a joint development agreement for a proposed battery energy storage system at Wellington in New South Wales. ...



Council approves Aypa battery storage proposal

CENTRE WELLINGTON - Aypa Power can charge ahead with its battery energy storage system (BESS) now that council has approved the proposal. Centre Wellington ...



Wellington Independent Energy Storage Station: Powering ...

If you're here, you're probably wondering how a giant "energy bank" like the Wellington Independent Energy Storage Station could reshape New South Wales' power grid. Spoiler: it's ...



CentrePort to pilot battery energy storage system ...

CentrePort is taking another step on its energy journey with an onsite battery energy storage system (BESS) which will improve resilience and enhance the potential for future emission reductions. BESS ...

Wellington Wall Mounted Energy Storage Box: The Space-Saving Power

With blackout seasons becoming the new normal and energy prices doing the cha-cha, the Wellington Wall-Mounted Energy Storage Box isn't just another gadget - it's your ...



Battery energy storage facility approved in Centre ...

FERGUS - Centre Wellington is set to become the home of one of Canada's largest battery energy storage systems for 25 years. Following staff recommendations at a Centre Wellington council meeting ...

Delegations line up in support of proposed battery ...

GRAS strongly urges Centre Wellington council to approve the battery energy storage system," she continued. In response to U.S. tariffs, Premier Doug Ford announced new procurement rules earlier in ...



Contact Us

For catalog requests, pricing, or partnerships, please visit:
<https://apartamenty-teneryfa.com.pl>