

**JH Solar**

# What is water storage power generation



## Overview

---

Pumped-storage hydroelectricity (PSH), or pumped hydroelectric energy storage (PHES), is a type of hydroelectric energy storage used by electric power systems for load balancing. A PSH system stores energy in the form of gravitational potential energy of water, pumped from a lower elevation reservoir to a higher.

A pumped-storage hydroelectricity generally consists of two water reservoirs at different heights, connected with each other. At times of low.

In closed-loop systems, pure pumped-storage plants store water in an upper reservoir with no natural inflows, while pump-back plants utilize a combination of pumped storage and conventional with an upper reservoir that is.

The main requirement for PSH is hilly country. The global greenfield pumped hydro atlas lists more than 800,000 potential sites around the.

Seawater Pumped storage plants can operate with seawater, although there are additional challenges compared to using fresh water, such as saltwater.

Taking into account conversion losses and evaporation losses from the exposed water surface, of 70–80% or more can be achieved. This technique is currently the most cost.

Water requirements for PSH are small: about 1 gigalitre of initial fill water per gigawatt-hour of storage. This water is recycled uphill and back downhill between the two reservoirs for many decades, but evaporation losses (beyond what rainfall and any inflow from local.

The first use of pumped storage was in 1907 in , at the Engeweiher pumped storage facility near Schaffhausen, Switzerland. In the 1930s reversible hydroelectric.

Pumped storage hydropower is a clever way to store electricity using two water reservoirs at different heights. When there is extra power, often from solar or wind, water is pumped from the lower reservoir to the upper one. When electricity is needed, water flows back down through turbines to.

Pumped storage hydropower is a clever way to store electricity using two water reservoirs at different heights. When there is extra power, often from solar or wind, water is pumped from the lower reservoir to the upper one. When electricity is needed, water flows back down through turbines to.

Pumped-storage hydroelectricity (PSH), or pumped hydroelectric energy storage (PHES), is a type of hydroelectric energy storage used by electric power systems for load balancing. A PSH system stores energy in the form of gravitational potential energy of water, pumped from a lower elevation.

Pumped storage hydropower (PSH) is a type of hydroelectric energy storage. It is a configuration of two water reservoirs at different elevations that can generate power as water moves down from one to the other (discharge), passing through a turbine. The system also requires power as it pumps water.

Pumped storage facilities are built to push water from a lower reservoir uphill to an elevated reservoir during times of surplus electricity. In pumping mode, electric energy is converted to potential energy and stored in the form of water at an upper elevation, which is why it is sometimes called.

A water battery — also known as a pumped storage hydropower system — is an energy storage and generation method that runs on water. When excess electricity is available, water is pumped to an upper reservoir, where it stands by like a bank of potential energy until there's a surge in demand. Later.

Pumped storage hydropower acts like a giant water battery, storing excess energy when demand is low and releasing it when demand is high, offering a flexible and reliable solution for energy management. While it provides significant benefits like grid stabilisation, rapid energy provision during.

Pumped-storage hydropower facilities are a type of hydroelectric storage system where water is pumped from a water source up to a storage reservoir at a higher elevation. The water is released from the upper reservoir to power hydro turbines located below the upper reservoir. They usually pump. What is storage hydropower?

When the demand for power is high, the potential energy could be released leading to the generation of hydroelectricity; hence, the storage hydropower unit is suitable for the supply of peak as well as base load. Again, the flow of the river downstream can also be regulated in the case of the storage hydropower scheme.

How does a pumped storage hydropower system store electrical energy?

Pumped storage hydropower systems store excess electrical energy by harnessing the potential energy stored in water. Fig. 1.3 depicts PSH, in which surplus energy is used to move water from a lower reservoir to a higher reservoir.

What is pumped-storage hydroelectricity?

Pumped-storage hydroelectricity (PSH), or pumped hydroelectric energy storage (PHES), is a type of hydroelectric energy storage used by electric power systems for load balancing. A PSH system stores energy in the form of gravitational potential energy of water, pumped from a lower elevation reservoir to a higher elevation.

What is pumped storage hydropower (PSH)?

Pumped storage hydropower (PSH) is a type of hydroelectric energy storage. It is a configuration of two water reservoirs at different elevations that can generate power as water moves down from one to the other (discharge), passing through a turbine. The system also requires power as it pumps water back into the upper reservoir (recharge).

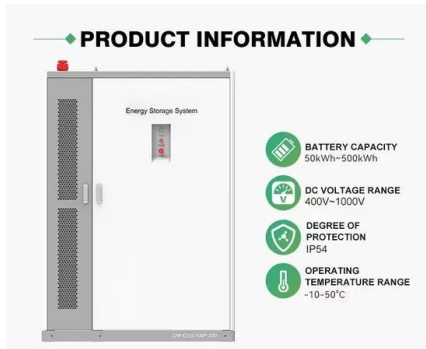
How water is stored as gravitational potential energy?

Water is stored as gravitational potential energy by means of pumped storage facilities. Commonly this type of energy storage is used for large-scale energy storage applications. One of the main challenges for storing energy is the round-trip efficiency of the respective technology.

Why is a storage hydropower unit a good choice?

Storing energy as potential energy next to the dam is the primary merit associated with this type of hydropower unit. When the demand for power is high, the potential energy could be released leading to the generation of hydroelectricity; hence, the storage hydropower unit is suitable for the supply of peak as well as base load.

## What is water storage power generation

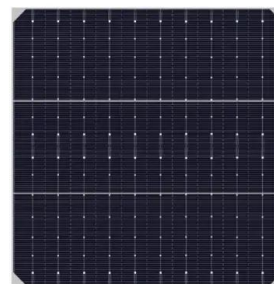


### What is renewable energy storage (and why is it ...

Liquifying rock or superheating sand and water mixtures can be used to store thermal energy. Thermal energy storage technologies include: Liquid-to-air transition energy storage Surplus grid electricity is ...

### Hydroelectric Power Generation

Hydroelectric power generation is a method of storing the potential energy of water by installing dams on rivers and other means, and using this energy to rotate water turbines to generate electricity. This ...



### Pumped-Storage Hydroelectricity

3.2.2 Pumped hydro storage Electrical energy may be stored through pumped-storage hydroelectricity, in which large amounts of water are pumped to an upper level, to be ...

### **Pumped Storage Hydropower Plants: PSH**

Pumped storage hydro plants are a type of energy storage system that utilizes the potential energy of water to store and generate electricity. This method stores energy in the form of

gravitational potential ...



### Pumped Storage

Pumped Storage PUMPED STORAGE Pumped storage is an essential solution for grid reliability, providing one of the few large-scale, affordable means of storing and deploying electricity. Pumped storage projects store ...



## Hydropower

These systems pump water to higher elevation when electricity demand is low so they can use the water to generate electricity during periods of high demand. Pumped storage hydropower ...



## Renewable Energy Storage Facts , ACP

Energy storage allows us to store clean energy to use at another time, increasing reliability, controlling costs, and helping build a more resilient grid. Get the clean energy storage facts from ACP.



## Pumped Storage

Pumped storage hydropower enables greater integration of other renewables (wind/solar) into the grid by utilizing excess generation, and being ready to produce power during low wind and solar generation periods.



## Most pumped storage electricity generators in the ...

Pumped storage involves pumping water into a storage reservoir during times of relatively low electricity demand and low electricity prices, such as during the night. When electricity demand is high, water flows downhill ...

## Electricity explained Energy storage for electricity generation

Energy storage for electricity generation An energy storage system (ESS) for electricity generation uses electricity (or some other energy source, such as solar-thermal energy) to charge an ...



## Pumped storage hydropower: Water batteries for ...

Pumped storage hydropower (PSH) is a form of clean energy storage that is ideal for electricity grid reliability and stability. PSH complements wind and solar by storing the excess electricity they create and providing the ...

## Types of Hydropower Plants

**Impoundment** The most common type of hydroelectric power plant is an impoundment facility. An impoundment facility, typically a large hydropower system, uses a dam to store river water in a reservoir. Water released ...

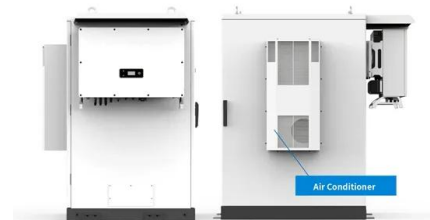


## Storage Hydropower

Hydropower storage plants accumulate the natural inflow of water into reservoirs (i.e., dammed lakes) in the upper reaches of a river where steep inclines favor the utilization of the water ...

## **Why Energy Storage is Just as Important as Generation**

As the world accelerates its shift toward clean energy, the focus often falls on how renewable power we can generate. From new offshore wind farms, record-breaking solar installations and ...



## **What are the water energy storage systems?**

Water energy storage systems are innovative solutions designed to store and release energy in the form of water, significantly contributing to energy management and optimization.

## What Is a Water Battery?

A water battery -- also known as a pumped storage hydropower system -- is an energy storage and generation method that runs on water. When excess electricity is available, water is pumped to an ...

**LPR Series 19'  
 Rack Mounted**

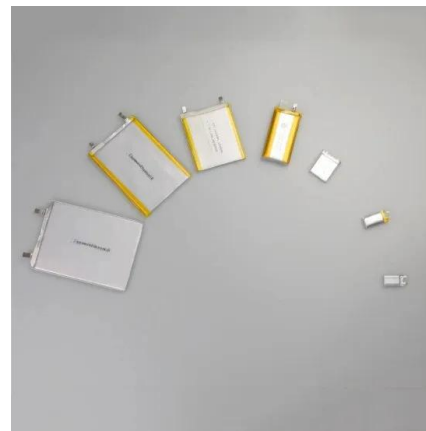


## **A New Hydropower Boom Uses Pumped Storage, ...**

So-called pumped storage, rather than conventional dams, is emerging as the future of deriving electricity from water's gravitational qualities.

## **These 4 energy storage technologies are key to ...**

Pumped hydro, batteries, thermal and mechanical energy storage store solar, wind, hydro and other renewable energy to supply peaks in demand for power.



## **What is an energy storage power station ...**

1. DEFINITION AND FUNCTIONALITY The concept of energy storage power stations refers to facilities that harness various technologies to store electrical energy for subsequent distribution and use. ...

## Pumped Storage Hydropower Projects Around the ...

Explore some of the most innovative and exciting pumped storage hydropower projects happening around the world and what they mean for the future of energy.



## Hydrogen Production: Electrolysis , Department of ...

Electrolysis is the process of using electricity to split water into hydrogen and oxygen. The reaction takes place in a unit called an electrolyzer.

## Pumped Storage: Using Water Towers, Aquifer Well Pumps to ...

Pumped storage has been found to be the most efficient means of storing the large amounts of energy required to have a measurable impact on a municipal or industrial ...



## [What is pumped storage hydro?](#)

What is pumped storage hydro? Pumped storage hydro (PSH) is a large-scale method of storing energy that can be converted into hydroelectric power. The long-duration storage technology has been used ...

## What is a pumped-storage hydroelectric power ...

What is a pumped-storage hydroelectric power plant? A pumped-storage hydroelectric power plant--also known as a reversible plant--is one of the most efficient large-scale energy storage solutions. It ...



## Hydropower and Other Water Energy Technologies

Water technologies encompass a variety of systems that use ocean or freshwater for electricity or thermal energy. The most familiar water technology is hydropower, in which the force of ...

## IRENA - International Renewable Energy Agency

Este informe examina la operación innovadora del almacenamiento hidroeléctrico bombeado, destacando su papel en la transición energética y la integración de energías renovables.



## Pumped Storage Hydropower

It is a configuration of two water reservoirs at different elevations that can generate power as water moves down from one to the other (discharge), passing through a turbine.

## What is Pumped Storage?

Pumped storage power plants are hydroelectric power stations that store and reuse energy. They have two reservoirs at different elevations to store and generate electricity. ...



## Electricity generation

Electricity generation is the process of generating electric power from sources of primary energy. For utilities in the electric power industry, it is the stage prior to its delivery (transmission, distribution, etc.) to end users or ...



## **Pumped Storage Hydropower: Advantages and Disadvantages**

At its core, you've got two reservoirs, one up high, one down low. When electricity demand is low, excess energy from the grid is used to pump water from the lower to the upper reservoir. This ...



## **Hydroelectric Power: How it Works , U.S. Geological Survey**

So just how do we get electricity from water? Actually, hydroelectric and coal-fired power plants produce electricity in a similar way. In both cases a power source is used to turn ...

## Contact Us

---

For catalog requests, pricing, or partnerships, please visit:  
<https://apartamenty-teneryfa.com.pl>