

JH Solar

Wind wheel energy storage



Overview

Flywheels may be used to store energy generated by wind turbines during off-peak periods or during high wind speeds. In 2010, Beacon Power began testing of their Smart Energy 25 (Gen 4) flywheel energy storage system at a wind farm in Tehachapi, California.

Flywheel energy storage (FES) works by accelerating a rotor () to a very high speed and maintaining the energy in the system as . When energy is extracted from the system, the flywheel's rotational.

A typical system consists of a flywheel supported by connected to a . The flywheel and sometimes.

TransportationAutomotiveIn the 1950s, flywheel-powered buses, known as .

- • • - Form of power supply
- - High-capacity electrochemical capacitor .

GeneralCompared with other ways to store electricity, FES systems have long lifetimes (lasting decades).

Flywheels are not as adversely affected by temperature changes, can operate at a much wider temperature range, and are not subject to many of the common failures of chemical . They are also less potentially damaging to the environment, being.

- Beacon Power Applies for DOE Grants to Fund up to 50% of Two 20 MW Energy Storage Plants, Sep. 1, 2009
- Sheahen.

Flywheel energy storage is an exciting solution for efficient and sustainable energy management. This innovative technology offers high efficiency and substantial environmental benefits. Let's dive into the exciting benefits of flywheel energy storage! We will explore its advantages, applications.

Flywheel energy storage is an exciting solution for efficient and sustainable energy management. This innovative technology offers high efficiency and substantial environmental benefits. Let's dive into the exciting benefits of flywheel energy storage! We will explore its advantages, applications.

Flywheel energy storage (FES) works by accelerating a rotor (flywheel) to a very high speed and maintaining the energy in the system as rotational energy. When energy is extracted from the system, the flywheel's rotational speed is reduced as a consequence of the principle of conservation of.

Flywheel energy storage system (FESS) will be needed at different locations in the wind farm, which can suppress the wind power fluctuation and add value to wind energy. A FESS that can store up to 3.6 kWh of usable energy in 12 minutes at a maximum 24,000 r/m was designed. Multiple flywheels can.

Compared with other energy storage technologies, flywheel energy storage (FES) has advantages of high round-trip efficiency and little environmental impact. FES is capable of helping low voltage ride through and smooth power output with appropriate control strategies and electronic control devices.

The method of storing energy in flywheels – Flywheel Energy Storage (FES) – has existed for many years, and a few places in the United States are already using it to, for example, even out fluctuations in New York's electricity supply. Researchers from Aarhus University, Danish Technological.

Wind wheel energy storage



(PDF) Energy Storage in Flywheels: An Overview

PDF , In a deregulated power market with increasing penetration of distributed generators and renewable sources, energy storage becomes a necessity . , Find, read and cite all the research you

TU Dresden builds huge flywheel storage system ...

TU Dresden builds massive flywheel storage to explore sustainable approach to offsetting fluctuating feed-ins from wind turbines. More on enformer!



World's Largest Flywheel Energy Storage System

Since there is very little friction, the flywheel spins continually with very little added energy input needed. Energy can then be drawn from the system on command by tapping into the spinning rotor as ...

Flywheel Energy Storage

Energy storage solutions are essential for integrating renewable energy sources like wind and solar by mitigating intermittency, enhancing grid reliability, and optimizing energy ...

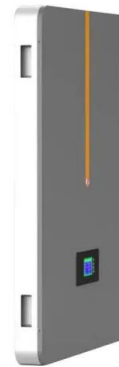


A flywheel in a wind turbine rotor for inertia control

In this paper, a flywheel energy storage that is an integral part of a wind turbine rotor is proposed. The rotor blades of a wind turbine are equipped with internal weights, which increase the inertia.

Optimisation of a wind power site through utilisation of flywheel

This paper utilises real world data to simulate a wind farm operating in tandem with a Flywheel Energy Storage System (FESS) and assesses the effectiveness of different ...



Design of a flywheel energy storage system for wind power

Flywheel energy storage system (FESS) will be needed at different locations in the wind farm, which can suppress the wind power fluctuation and add value to wind energy. A ...

Flywheel Energy Storage

Flywheel energy storage is defined as a method for storing electricity in the form of kinetic energy by spinning a flywheel at high speeds, which is facilitated by magnetic levitation in an ...



A comprehensive review of Flywheel Energy Storage System ...

Energy storage systems (ESSs) play a very important role in recent years. Flywheel is one of the oldest storage energy devices and it has several benefits. Flywheel ...

Review of flywheel energy storage systems for wind power ...

Compared with other energy storage technologies, flywheel energy storage (FES) has advantages of high round-trip efficiency and little environmental impact. FES is capable of ...

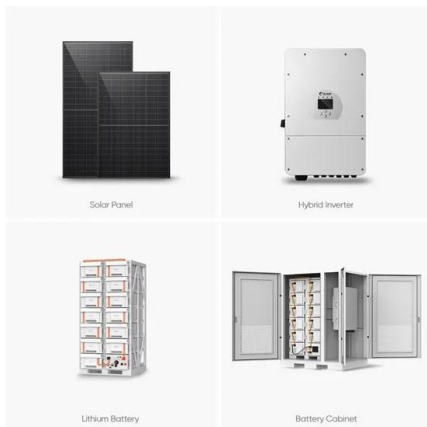


Critical Review of Flywheel Energy Storage ...

A preliminary dynamic behaviors analysis of a hybrid energy storage system based on adiabatic compressed air energy storage and flywheel energy storage system for wind power application.

An Application of Flywheel Energy Storage System for Wind ...

Recently, the use of Wind Energy Conversion System (WECS) is increasing all over the world. Wind generators with several mega-watt rating have been developed an



Flywheel Energy Storage

Flywheels as mechanical batteries Flywheel Energy Storage (FES) is a relatively new concept that is being used to overcome the limitations of intermittent energy supplies, such as Solar PV or Wind Turbines that do ...

Learn how flywheel energy storage works , Planète Énergies

Flywheel energy storage consists in storing kinetic energy via the rotation of a heavy object. Find out how it works.



Flywheel Systems for Utility Scale Energy Storage

Flywheel Systems for Utility Scale Energy Storage is the final report for the Flywheel Energy Storage System project (contract number EPC-15-016) conducted by Amber Kinetics, Inc. The ...

Flywheel energy storage technologies for wind energy systems

The inclusion of flywheel energy storage in a power system with significant penetration of wind power and other intermittent generation has been studied by Nyeng et al. ...



Energy Storage , Falcon Flywheels , England

Grid-Scale Kinetic Energy Storage Falcon Flywheels is an early-stage startup developing flywheel energy storage for electricity grids around the world. The rapid fluctuation of wind and solar ...

Operation of a Wind Turbine-Flywheel Energy ...

The paper presents the issues of a wind turbine-flywheel energy storage system (WT-FESS) operation under real conditions. Stochastic changes of wind energy in time cause significant fluctuations of ...



Optimization for Wind Power Integration with Flywheel Energy ...

To address the issue of highly intermittent power output from wind energy conversion systems (WECS), a strategy involving backup generators and/or energy storage

Operation of a Wind Turbine-Flywheel Energy Storage System ...

The paper presents the issues of a wind turbine-flywheel energy storage system (WT-FESS) operation under real conditions. Stochastic changes of wind energy in time cause ...



Flywheel energy storage

Flywheel energy storage From Wikipedia, the free encyclopedia Flywheel energy storage (FES) works by accelerating a rotor (flywheel) to a very high speed and maintaining the energy in the ...

Wind Turbines: Spinning the Wheels of Renewable ...

In the quest for sustainable and clean energy sources, wind turbines have emerged as towering giants of innovation. These colossal structures harness the power of the wind to generate electricity, contributing significantly to ...



Flywheel Energy Storage Systems and Their ...

This study gives a critical review of flywheel energy storage systems and their feasibility in various applications. Flywheel energy storage systems have gained increased popularity as a method of

An Application of Flywheel Energy Storage System for Wind Energy

Recently, the use of Wind Energy Conversion System (WECS) is increasing all over the world. Wind generators with several mega-watt rating have been developed and ...

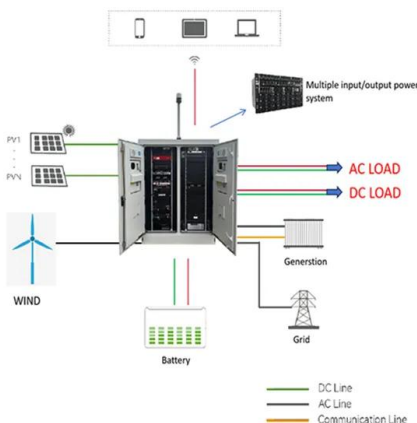


High-tension, vertical filament winding enables ...

Deciding that modern batteries are too costly, too difficult to recycle and reliant on too many rare metals, the startup team turned to flywheel energy storage systems, which store and release energy through ...

Smoothing of wind power using flywheel energy ...

Flywheel systems are quick acting energy storage that enable smoothing of a wind turbine output to ensure a controllable power dispatch. The effectiveness of a flywheel depends on how well it can b



Design of a flywheel energy storage system for ...

Flywheel energy storage system (FESS) will be needed at different locations in the wind farm, which can suppress the wind power fluctuation and add value to wind energy. A FESS that can store up to 3.6 ...

Applications of flywheel energy storage system on load frequency

Flywheel energy storage systems (FESS) are considered environmentally friendly short-term energy storage solutions due to their capacity for rapid and efficient energy storage ...



A Review of Flywheel Energy Storage System ...

The operation of the electricity network has grown more complex due to the increased adoption of renewable energy resources, such as wind and solar power. Using energy storage technology can improve ...

A comprehensive review of wind power integration and energy storage

Integrating wind power with energy storage technologies is crucial for frequency regulation in modern power systems, ensuring the reliable and cost-effective operation of ...

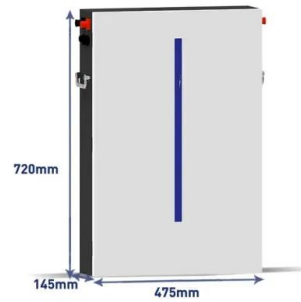


How This Mechanical Battery is Making a Comeback

This is the Dinglun Flywheel Energy Storage Power Station. At 30 MW, this is likely the biggest Flywheel Energy Storage System on the planet. Don't let that spin you around though. While its sheer size is ...

How to Store Wind Energy: Top Solutions Explained

Wind energy storage solutions are vital for optimizing energy use, but which methods truly maximize efficiency and reliability? Discover the top technologies now.



Contact Us

For catalog requests, pricing, or partnerships, please visit:
<https://apartamenty-teneryfa.com.pl>